

Southwark
Council

Tackling Serious Violent Crime

Jonathon Toy

Head of Community Safety and Enforcement

Nicola Lockwood

Tackling Violent Crime Co-ordinator

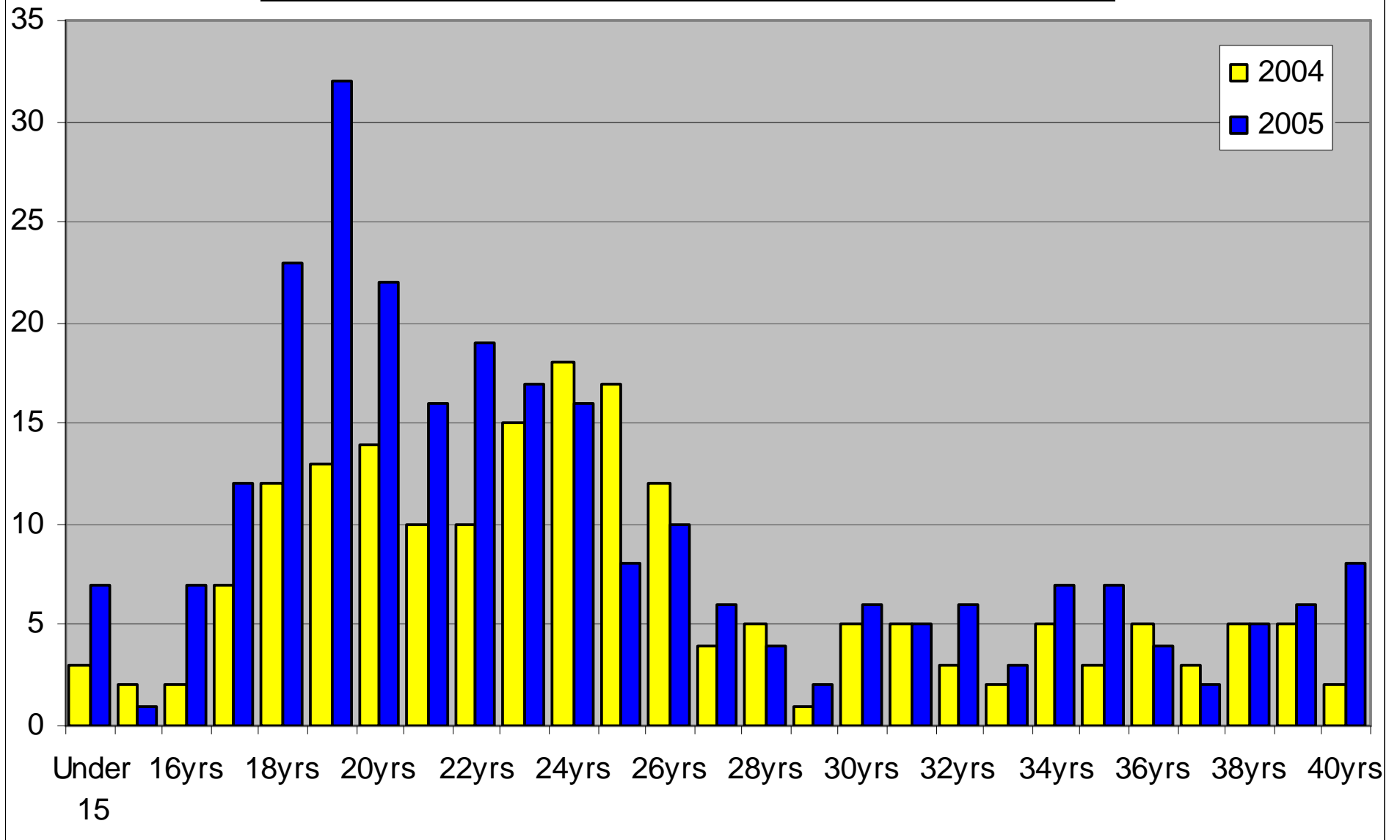
Objectives of the workshop

- **Why have we set up the 5 borough project?**
- **Who is involved?**
- **What it aims to do?**
- **When?**
- **What issues have we faced?**
- **What happens next?**

Developing Gangs Situation in London

	2003	2004	2005	2006
Number of victims under 20	31	39	82	79
% of victims under 20	16%	19%	27%	31%

Trident victims age 40 years or less



Age of Suspects Charged with Trident Murders/Shootings

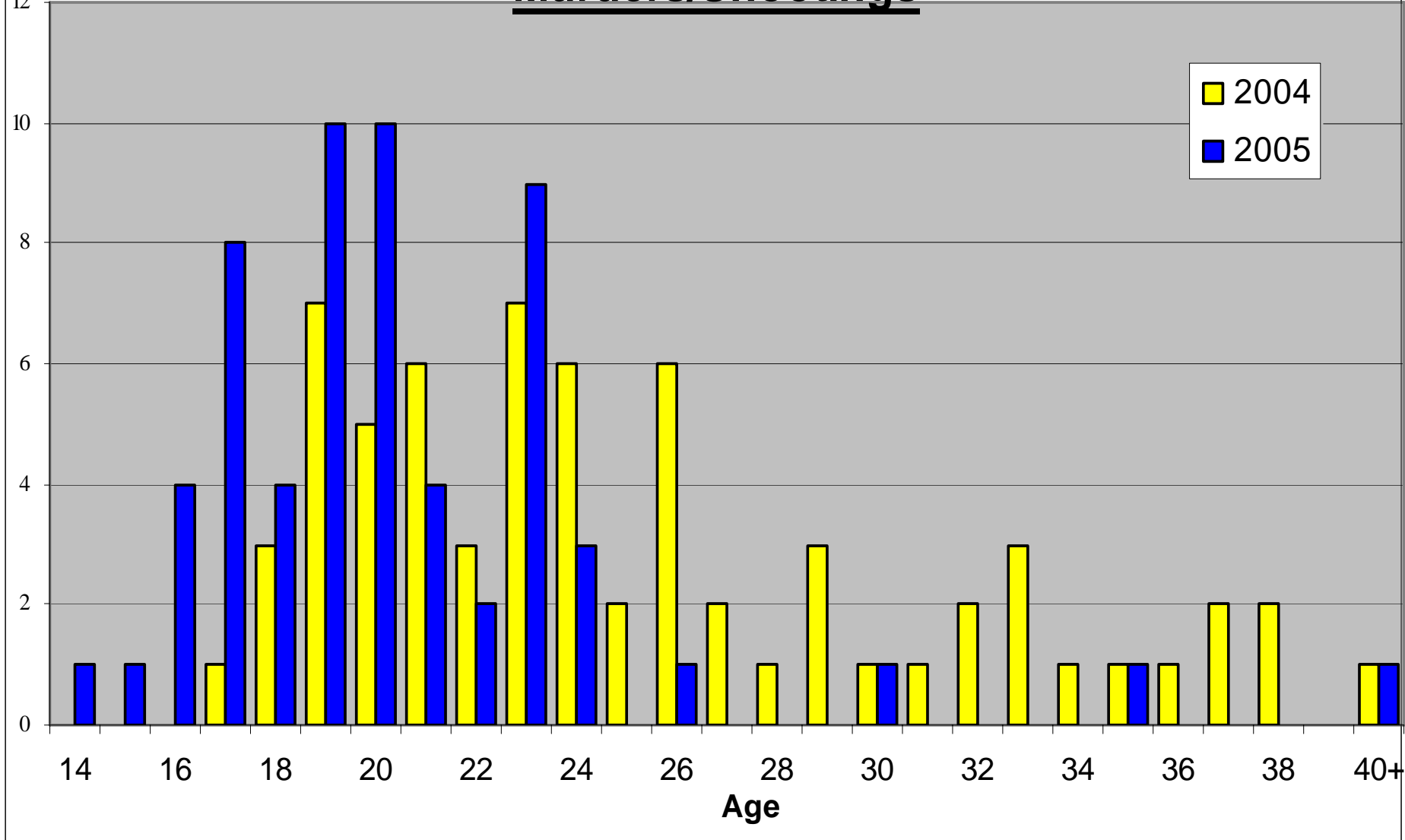
No.

12
10
8
6
4
2
0

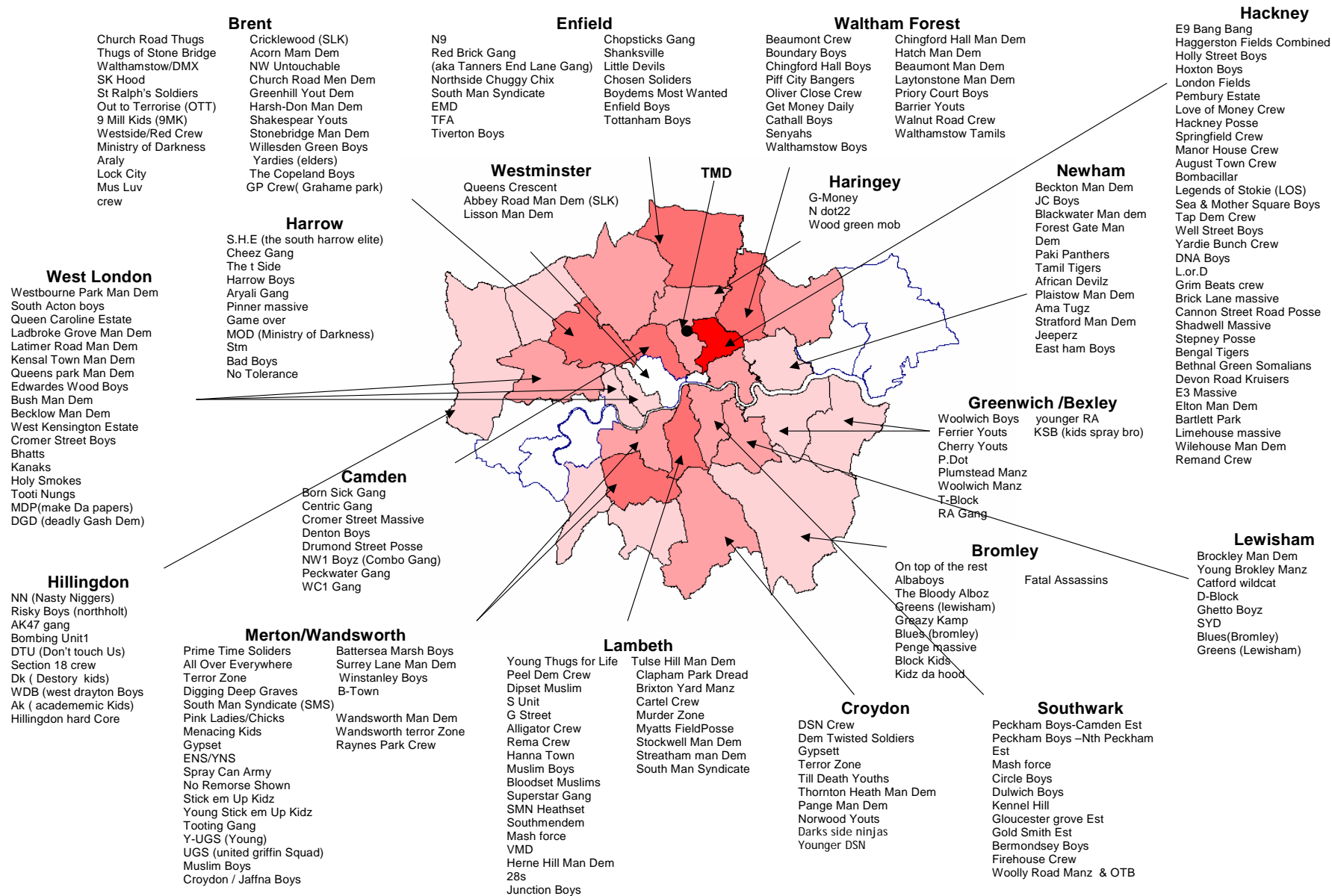
2004
2005

14 16 18 20 22 24 26 28 30 32 34 36 38 40+

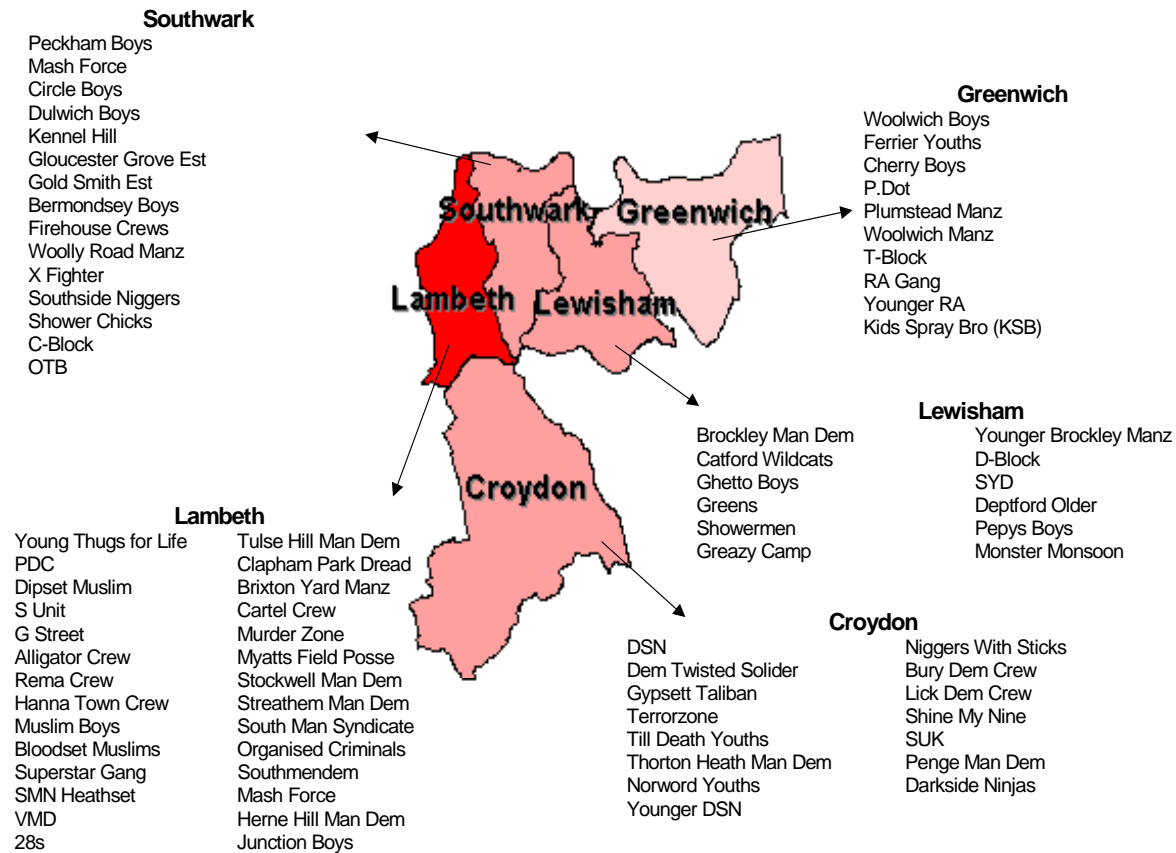
Age



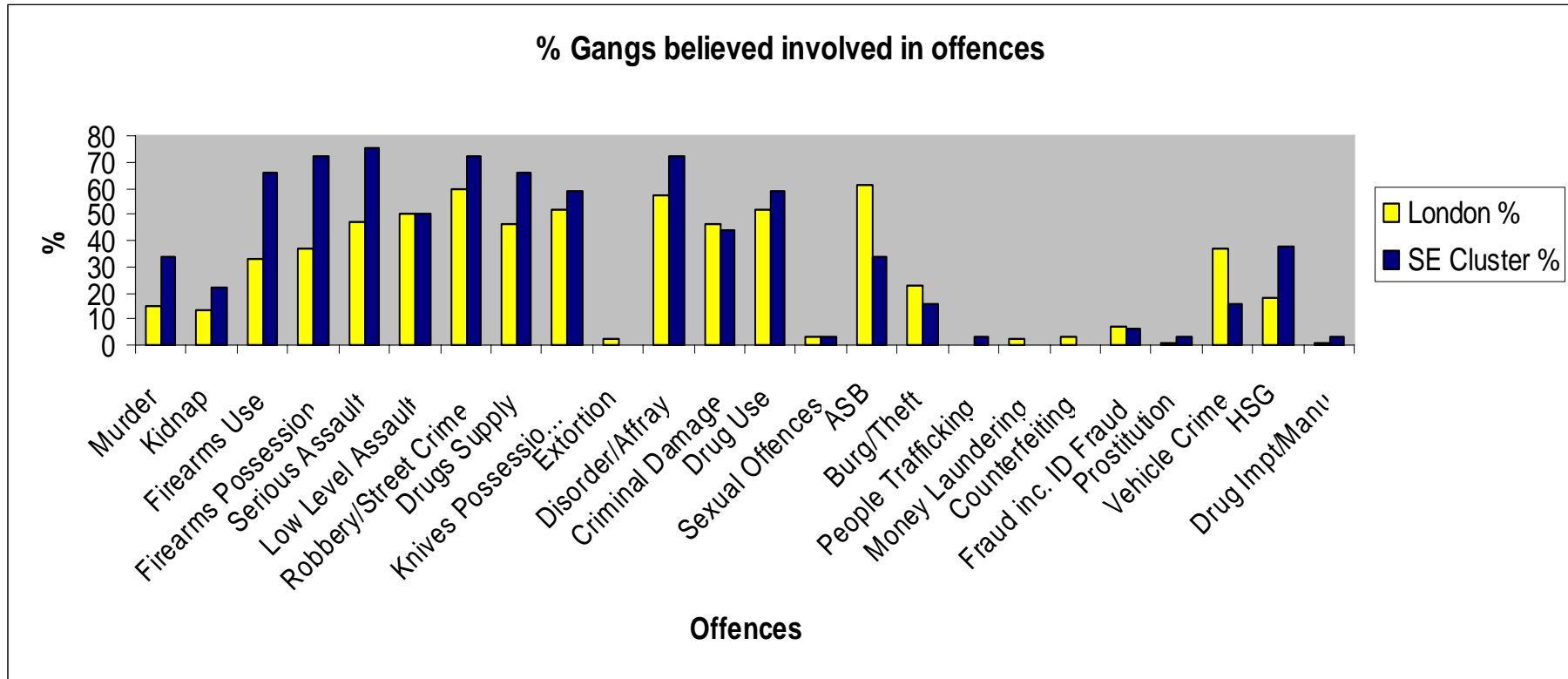
Prevalence of Gangs in London



Current Intelligence Picture – SE Cluster



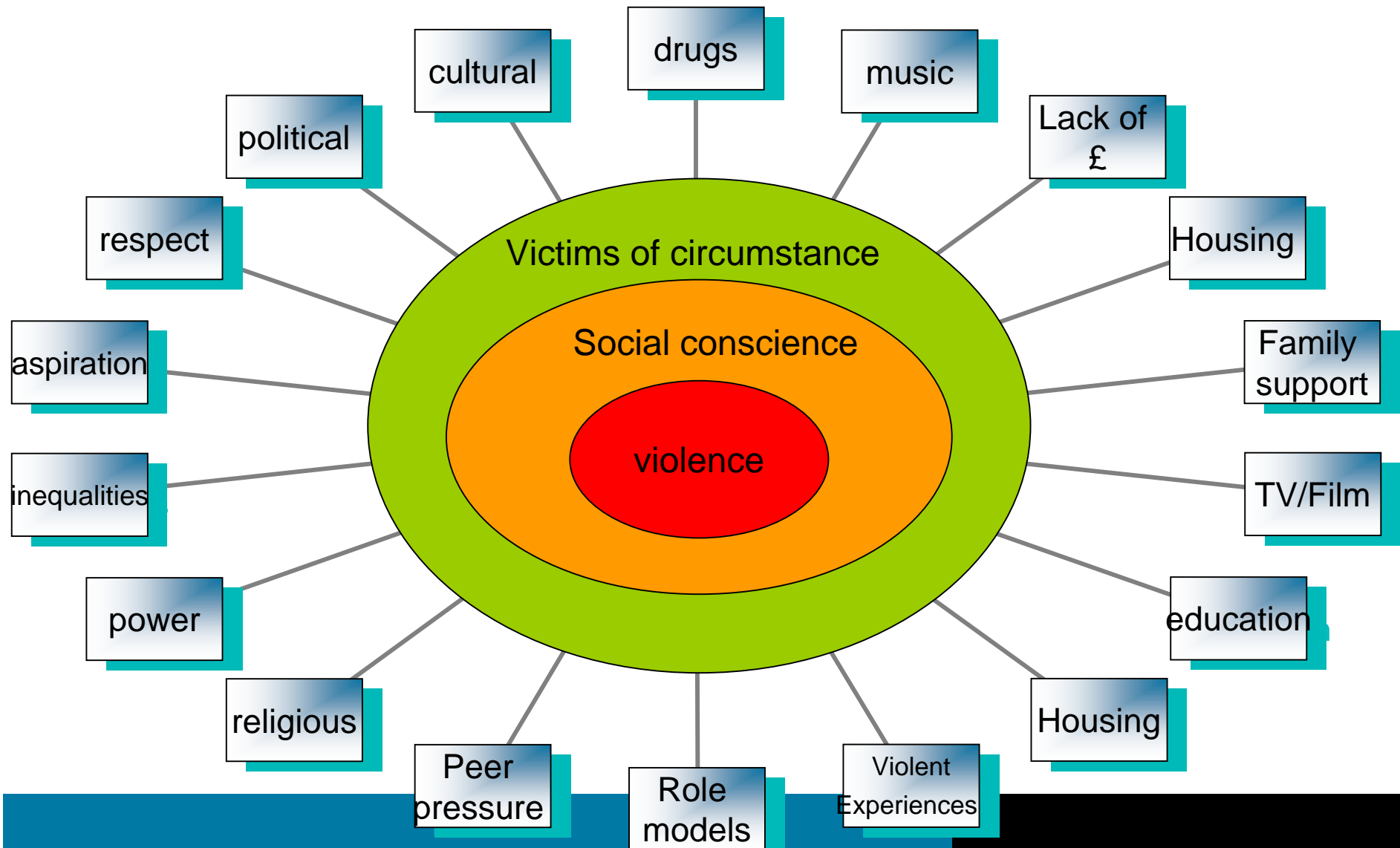
Criminality



What are we aiming to achieve?

- **Adding value to current borough work**

What actually drives serious violent behaviour?



Identified priorities

Strand		Issue	Explanation
Understanding the problem	1	Knowledge	Academic research commissioned to establish the specific nature, extent and dynamic of gangs across the Boroughs. The research will focus on protective and risk factors, an understanding of the 'mindset' and cross border issues such as transport hubs/routes. Research is likely to include both quantitative and qualitative study including ethnographic work
	2	Quality and extent of intelligence and cross border sharing	Intelligence sharing mechanisms, data quality and standards. Communication with front line staff, raising gangs as an issue, definitional issues and quality control. Open source. Consideration to be given to joint gangs database
	3	Two way partner information sharing protocols	In particular, two way flow of information between police, YOTS, Education, Prison and Probation Service, with clear thresholds for the extent of information sharing to ensure effective risk management
	4	Working with young people	Two way communication with those at the direct interface with those in gangs/ on the fringes of gangs, including the voluntary sector and youth workers. Co-ordination, training and support, including raising awareness of the interventions available to support those at risk of gang membership
	5	Lack of analysis and cross border analysis	Gangs issues are not confined within one Boroughs boundaries

Identified priorities

Prevention	6	Identification of those at risk	How we can identify those at risk, who should be identifying them? Processes should cover both populations and individuals
	7	Interventions to Divert/ Disrupt	To both deter and divert those from gang membership/ offending. A comprehensive mapping exercise should be conducted of what is available, including nature of the intervention, contact details, age range covered by any project, and any existing evaluation
	8	Evaluation of interventions	Do project/ pilots always work? Many claims are made. It is important not to stifle innovation or unnecessarily increase bureaucracy - however minimum standards of evaluation should be set to facilitate the identification, dissemination and funding of good practice
	9	Advice and information/ dissemination of good practice	Ideally this would include a helpline (linked to childline?), as well as a booklet/ internet site detailing service providers and details of their service, utilising the outcomes of the mapping exercise above. The primary audience will be the community, outlining support available. However, it should also be circulated to professionals, especially those on the front line, including teachers, youth workers, Safer Neighbourhood officers etc. Specific advice will be produced on gangs for parents, partners, carers, family and friends
	10	Marketing campaign	Based on the earlier understanding of the problem and the advice at 9, this will emphasise the negative consequences of gang membership and stress positive lifestyle options through a variety of media including the internet. The strategy will ensure that there is no glorification of gangs, no naming of them, or any activity which might reinforce gang identity
	11	Verbal input to those at risk	Primarily in Schools and youth focused, but also widening this to older gang members and through other face to face opportunities to engage with those at risk of gang membership
	12	Community Development work	Supporting communities to respond through community capacity building. For example cross border events aimed at cross generational audience

Identified Priorities

	13	Relocation/ Rehousing policy	Agreeing a cross border policy to rehouse high risk victims/ gang members wishing to exit gangs
	14	Gang mediation and conflict resolution	Building on successful work in Northern Ireland, Manchester and Birmingham with those at the very top level of offending
	15	Project communications strategy	Many of the other worksteams contain communications elements, each work stream to which this is relevant will have its own communication strategy which will feed into the overall communication strategy
	16	Management of venues (e.g. licensed prmisses)	Prevention strategies around venues such as licensed premises, youth clubs
Pro-activity	17	ASBO's and ABC's	Providing advice and menu of options to Boroughs to utilise the full range of tools available to disrupt the gang dynamic. This will include ABSO's and ABC's, but also look at evictions, and other partnership options, including police
	18	Tasking	Clear and transparent internal police tasking process, with processes linking into joint partner enforcement activity as above
	19	Immigration	Enforcement as appropriate, providing a process to focus immigration services on gang members engaged in the most serious offending
	20	Courts	Ensuring fully joined up approach with all partners. This will also look at adopting existing mechanisms to ensure impact on communities is fully considered in court cases of gang related incidents. Support also for of geographical or curfew based bail conditions to interfere with offending behaviour

Thank you

What would you like to see included?

How can this work assist you?

What can you do to play an active part?